

## Early works at the Berry Reserve car park, Narrabeen

To deliver a new B-Line service, a program of works is proposed along the corridor from the Northern Beaches to the CBD including roadworks, new bus stops, new commuter car parking facilities and improvements to commuter, pedestrian and cycling links.

## What's happening at Narrabeen?

At Narrabeen, the B-Line program includes a new northbound and southbound B-Line stop as well as 40 additional commuter car parking spaces in the Berry Reserve car park.

## Early works

From **Wednesday 18 January 2017**, our team will be carrying out early works at the Berry Reserve car park in Narrabeen.

The work will include:

- installing tree protection materials and other environmental controls
- underground service investigations
- installing temporary fencing and hoardings
- initial works to redirect the active transport footpath between the car park and Narrabeen Lagoon.

If access to the existing toilet facilities is restricted during the works, a temporary toilet block will be established within the area.

## Work hours

Working hours will be from 7am to 6pm, Monday to Friday and 8am to 1pm on Saturdays. No work will take place on Thursday 26 January (Australia Day).

## How will the work affect you?

Every effort will be made to minimise noise impacts, including the use of noise barriers, using vehicles with reversing squawkers (not beepers) and the selective use of noisy machinery.

## Traffic changes

Up to 6 commuter car park spaces will be unavailable throughout these early works. Temporary signage and traffic controllers will direct drivers and pedestrians while the works are taking place.

## Next steps

Construction of the expanded car park is expected to begin in February 2017. We will notify you before this starts.

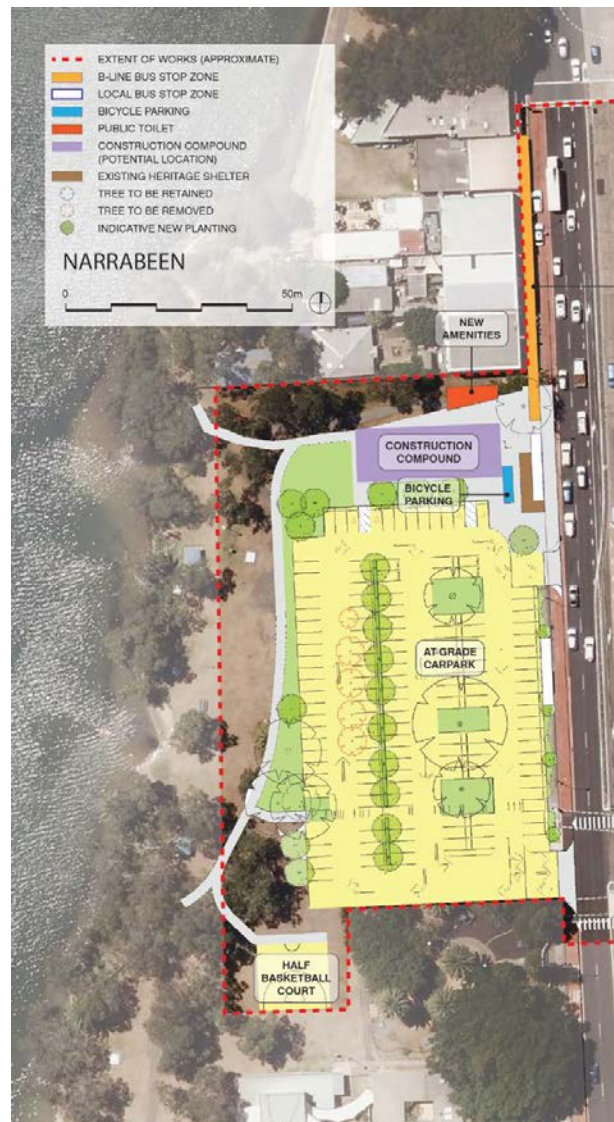
Work on the new basketball court, relocated bus stops and new toilet block is scheduled to take place later in the year.

## Contact us

If you have any questions, please call our infoline on 1800 048 751 or email [projects@transport.nsw.gov.au](mailto:projects@transport.nsw.gov.au) or visit [b-line.transport.nsw.gov.au/](http://b-line.transport.nsw.gov.au/)

## Key features of the B-Line works at Narrabeen

- Extending the existing street level car park next to Pittwater Road at Berry Reserve to provide an additional 40 car parking spaces
- Providing new northbound and southbound B-Line bus stops on Pittwater Road north of Albert Street, including seating and real-time information
- Demolishing existing toilets and providing new public toilets
- Providing bicycle storage and improving bicycle and pedestrian links
- Removing five trees next to the existing car park and planting 20 trees to offset this loss (the three mature Sydney Blue Gums will not be affected)
- Refurbishing the existing wooden heritage bus shelter (former tram shelter)
- Demolishing the existing 1950s style bus shelter
- Undertaking minor road works at the car park access
- Relocating the existing basketball court and shared path in Berry Reserve.



(Indicative only. Subject to final design)